

# WARBY NEWS

Deans Road, Airds  
NSW 2560

Ph.: 46258140 Fax: 46281637  
Email: johnwarby-p.school@det.nsw.edu.au

**23<sup>rd</sup> October 2019**

**Week 2 Term 4**

## Relieving Principal's Report

### Term 4 is here already!

Welcome to Term 4. I hope you were able to spend some quality time with the children during the holiday break.

It's an exciting part of the year as we begin to transition our pre-schoolers to "big school" for next year and also do our final preparations for our Year 6 students moving onto high school. Our Year 2 children are getting ready for primary and our youngest students are getting ready to complete Kindergarten.

There are so many wonderful events happening this term for our students. The Year 6 Farewell, Stage 3 Camp, Rewards Day, Presentation Day, K-2 Christmas Luncheon and The Talent Quest, just to name a few.

We also ask that all families support the Gymnastics program that has been organised for the students. Thank you to those families that have already paid or have approached the school for assistance. Could all our families please pay the \$5 per session so the students do not miss out on this valuable experience.

Thank you to all the families in our school who are supporting the PBL (Positive Behaviour for Learning) Focus of "Wearing hats so we are safe outside". We have had a very good response with only 20 students in the entire school not having a hat yesterday. Please ensure that wearing a hat becomes a very important part of the student's morning routine when getting ready for school.

As you may know, our school is in the process of being upgraded in certain areas. We currently have murals and gardens being completed and also the roof and electrical wiring of several buildings. In the near future we will have additional outdoor furniture, dry river beds to explore and several raised sandpits installed for students to use and enjoy.

Our students received wonderful praise from all the workers that have been on site for the past 2 weeks, about their safe and respectful behaviour towards all the builders and the equipment. They should all be very proud of the way they have adapted to several changes in our playground and daily procedures.

Unfortunately, a very small group of our students have been involved in several incidents on the way to or from school that are not acceptable. Can you please discuss the importance of once the students have arrived at school, they are to stay at school. We have had students leave the school grounds after their arrival. Also, all students are to cross the road safely and not bother any members of the public on their way home. Students must be respectful of all community members when travelling to and from school.

## **Calendar 2019**

### **Thursday 24<sup>th</sup> Oct**

- Bandana Day (Mufti)
- Gymnastics begins

### **Friday 25<sup>th</sup> October**

- Gala Day
- Gymnastics begins

### **Wednesday 30<sup>th</sup> Oct**

- Around The World Day
- School Leaders at Parliament house

### **Thursday 31<sup>st</sup> Oct**

- P&C Colour Run

We would like to farewell Mrs Gewagis, Mrs G, who is going to be on maternity leave as of this Friday. We wish her well on the safe arrival of her little baby and hope that she comes and visits when she can. Thank you so very much for all your hard work and dedication. It is greatly appreciated. As you may know, Sue in our canteen is Mrs G's mum, so it's also exciting for her as she becomes a Grandmother for the first time.

It has been an absolute pleasure to be the Principal for this past fortnight. I hope Miss Page has had a very well deserved break and look forward to seeing her back next week.

Take care  
Ms Murray

### **Kindergarten Enrolments for 2020**

It is time to enrol for Kindergarten 2020. Please encourage anyone considering an enrolment for next year, to call into the office and collect an enrolment form. Keep spreading the good word and let other parents of school age children know that we are accepting enrolments now. To our existing families, please let us know if you are moving or changing schools next year as this affects the number of students enrolled and staffing for 2020.

### **Kindergarten Orientation Information Session**

Friday, 1<sup>st</sup> November 9:30-11am in the hall - morning tea will be provided.

We ask that only parents and carers attend this session. Please bring your enrolment forms if you have not already submitted them to the school office staff. We look forward to seeing you all there.

### **Kindergarten Transition Sessions**

Below are the transition times and dates. Invitations were sent out to all families in the holidays that stated what days we would like them to attend.

#### **Wednesday's Group- Mrs Thompson's Room**

- Session 1: Wednesday 6<sup>th</sup> November 9:30-11am (Parents, Carers and students)  
Session 2: Wednesday 13<sup>th</sup> November 9:30-11am (Parents, Carers and students)  
Session 3: Wednesday 20<sup>th</sup> November 9:30 -11am (students only)  
Session 4: Wednesday 27<sup>th</sup> November 9:30-11am (students only)

#### **Friday's Group- Mrs Wilson's Room**

- Session 1: Friday 8<sup>th</sup> November 9:30-11am (Parents, Carers and students)  
Session 2: Friday 15<sup>th</sup> November 9:30-11am (Parents, Carers and students)  
Session 3: Friday 22<sup>nd</sup> November 9:30 -11am (students only)  
Session 4: Friday 29<sup>th</sup> November 9:30-11am (students only)

This is such a special time for families and we are proud to help support you and the students through this big step of starting school. We are looking forward to meeting you all, see you then.



#### **Student of the Week**

Week 2 - Emilia C  
from Madagascar

#### **Class of the Week**

Week 2- Arendelle

## Tell Them From Me



I am delighted that this term, our school, like many other public schools in the state, will participate in a Department of Education initiative: the *Tell Them From Me* student feedback survey. The survey measures factors that are known to affect academic achievement and other student outcomes. The focus of the NSW-wide survey is on student wellbeing, engagement and effective teaching practices.

You may remember that our students also participated in a *Tell Them From Me* student survey in Term 1 this year. Asking students to complete the survey twice in one year allows us to identify trends in student responses as well as track engagement and motivation across the school year.

The survey is a great opportunity for our students to provide us with valuable and quick feedback on what they think about school life, how engaged they are with school and the different ways that teachers interact with them. More than 6,300 schools in Australia and around the world have used *Tell Them From Me* to survey 5.4 million students. Capturing the voices of our students will help improve how we do things at our school.

More information about the survey is available at: <http://surveys.cese.nsw.gov.au>

I want to assure you that the survey is confidential. The survey is conducted online and will typically take less than 30 minutes to complete. It will be administered during school hours between 26 August and 25 October. Participating in the survey is entirely voluntary.

A consent form and FAQs for parents/carers about the survey is being sent home with students. If you **do not** want your child or children to participate, please return the form to school by 13<sup>th</sup> September 2019.

Copies of the form and FAQs are available from: <http://surveys.cese.nsw.gov.au/information-for-parents>.

The consent form and FAQs are available in 23 languages.



We will also be participating in the *Partners in Learning* parent survey, another part of the *Tell Them From Me* suite of surveys (student, teacher and parent surveys) on student engagement. The survey asks parents and carers questions about different factors that are known to impact on student wellbeing and engagement. Running this survey will help our school understand parents' and carers' perspectives on their child's experience at school. These include: communication between parents/carers and staff, activities and practices at home and parent/carer views on the school's support of learning and behaviour. This valuable feedback will help our school make practical improvements.

The survey is conducted entirely online on smartphones, iPads, tablets, laptops or computers. The survey will typically take 15 minutes or less to complete and is completely confidential. The parent survey will be conducted between 26 August and 25 October. Although participating in the survey is entirely voluntary, your responses are very much appreciated.

More information about the survey is available at: <http://surveys.cese.nsw.gov.au> .

**To do the survey for our school go to:** <http://nsw.tellthemfromme.com/jwttfm2019>

The survey is available in 23 languages.



Education

High Performing Students Team

## Applying for Year 7 entry to selective high schools

# in 2021

Thinking of applying for  
a government selective  
high school for Year 7  
in 2021?

You must apply online at:

[education.nsw.gov.au/public-schools/selective-high-schools-and-opportunity-classes/year-7](https://education.nsw.gov.au/public-schools/selective-high-schools-and-opportunity-classes/year-7)

### Key Dates

Application website opens:  
**8 October 2019**

Application website closes:  
**10 pm, 11 November 2019**  
You must apply before this deadline.

Test authority advice sent to all applicants:  
**27 February 2020**

Selective High School placement test:  
**12 March 2020**

Placement outcome information sent  
overnight on:  
**4 July 2020**

**Please read this booklet carefully before  
applying.**

Parents should check the website at  
[education.nsw.gov.au/shs-oc](https://education.nsw.gov.au/shs-oc) regularly  
throughout the application and placement  
process.

Please check the website for information  
before you contact the Team.



The Selective High Schools placement process for Year 7 entry is administered by the High Performing Students Team\*.

#### Contact Details:

High Performing Students Team, NSW Department of Education  
Email: [ssu@det.nsw.edu.au](mailto:ssu@det.nsw.edu.au)  
Telephone: 1300 880 367  
Fax: 02 9266 8435  
Postal Address: Locked Bag 53, DARLINGHURST NSW 1300  
Facebook: <https://www.facebook.com/groups/772251106301086/>

#### Please Note:

\* In this document, the High Performing Students Team is referred to as the Team.

'Parent' is defined under the Education Act, 1990, as a 'guardian or other person having custody or care of a child'



## Stages of the placement process

1	Parents read the application information online	From late-September 2019
2	Parents register, receive a password, log in and then complete and submit the application online	From 8 October 2019 to 11 November 2019
3	Parents request any disability provisions	From 8 October 2019 to 11 November 2019
4	Principals provide school assessment scores	From 21 October 2019 to 7 December 2019
5	Parents are sent 'Test authority' letter	On 27 February 2020
6	Students sit the Selective High School Placement Test for entry to Year 7 in 2021	On 12 March 2020
7	Any illness/misadventure requests are submitted	By 26 March 2020
8	Last day to change selective high school choices	26 April 2020
9	School selection committees meet	In May and June 2020
10	Placement outcome sent to parents	Overnight on 4 July 2020
11	Parents submit any appeals to principals	By 22 July 2020
12	Parents accept or decline offers	From July 2020 to at least the end of Term 1 2021
13	Students who have accepted offers are withdrawn from reserve lists	At 3pm on 16 December 2020
14	Parents of successful students receive 'Authority to attend' letters to take to the school on the first day of term in 2021	Mid-January 2021

Cut this out and keep as a reminder

## What are selective high schools?

Selective high schools cater for academically gifted students with high potential who may otherwise be without sufficient classmates of their own academic standard. Selective high schools help these students to learn by grouping them with students of similar ability, using specialised teaching methods and materials.

Year 7 enrolments are available at:

- seventeen fully selective high schools
- twenty-four partially selective high schools
- four agricultural high schools, three of which have boarding places where students live at the school for the school term. Find out more about boarding at: <https://education.nsw.gov.au/public-school/selective-high-schools-and-opportunity-classes/year-7/information-for-applicants/agricultural-high-schools>
- one virtual secondary school, Aurora College, for students in rural and remote areas. Find out more at <http://www.aurora.nsw.edu.au/>

See a list of selective high schools and their websites at the end of this document. A map is also available at <http://www.maptive.com/ver3/Selective>

Find more information about catering for academically gifted students with high potential in NSW at <https://education.nsw.gov.au/teaching-and-learning/high-potential-and-gifted-education>

For translated information about selective high school placement go to <https://education.nsw.gov.au/public-schools/going-to-a-public-school/translated-documents/opportunity-class-and-selective-high-school-fact-sheet>

## Who can apply?

Parents of students enrolled in NSW government and non-government primary schools, home schools, interstate and overseas schools can apply.

Parents of Aboriginal students are encouraged to apply for selective high school placement. Find out more at <https://education.nsw.gov.au/public-schools/selective-high-schools-and-opportunity-classes/general-information/student-experience>

For further information and support, parents can speak with their child's current principal, or contact their local Aboriginal Education and Wellbeing Advisor

## **Kindergarten 2020**

We are very excited to announce our **Kindergarten Orientation Session**

**Friday 1<sup>st</sup> November in the school hall.**

A few reminders:

- Please return the enrolment form with the student's birth certificate, updated immunisation and proof of address to the front office by Week 10, Term 3.
- Invitations to the Orientation and Transition Program have been sent in the mail. Please RSVP as soon as possible.

We are looking forward to welcoming all our 2020 families and students! 😊

Thank you,  
Mrs Thompson & Ms Murray



## **Preschool Enrolment for 2020**



Do you have a child or know someone who is turning 4 on or before 31<sup>st</sup> July 2020? If so, they are eligible to enrol in our Preschool. Please see the ladies in the office for an enrolment form.

## **School Banking**

School Banking is on every Wednesday through the school term.

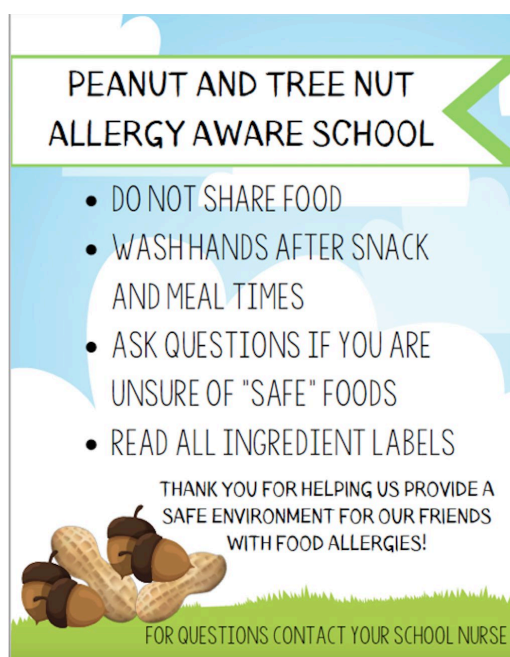
Could students or parents/caregivers please bring all Bank Books to the front office by 9:30am on Wednesday's for processing.

Any student or parent/caregiver interested in starting School Banking, please visit the ladies in the office for more information.



## **Nut Aware School**

Please be aware that we have students with nut allergies at our school. We ask that you not send any nut products such as Nutella or Peanut Butter to school in your child/ren's lunch boxes. We appreciate your support in the safety of our students.



# Around the World Day 2019

Come and join our students for a family fun day!



**When: Wednesday 30<sup>th</sup> October  
2019**

**Picnic: 10:50 am to 11.25 am**

**Activities: 11.25 am to 1.25 pm**

Students and their families are invited to join different activities from each country and look at class displays.

Don't forget to pre-order your sausage sizzle directly from the canteen! The canteen will be donating \$1.00 to the school for every sausage sizzle sold!





## Madagascar Gardeners



Our little gardeners harvested the snow peas, beans and lettuce in the K/2 garden. We can't wait for our Woolworths Discover seedlings to grow!

## Disco

A fantastic time was had by all at the disco. Thank you for supporting our school events. It is greatly appreciated and the children and the staff, who showed off their groovy moves, loved it!



## **P & C Newsletter**

Welcome back to term 4, we hope everyone had a relaxing and enjoyable holiday.

This term we have quite a few events occurring. First up on 31<sup>st</sup> of October is our school Colour Run. There is still time to get sponsors by either cash or via the internet at

<https://schoolfundraising.com.au>. It is going to be a great day and each child will receive a participation certificate and a photo.

Later on in the term we have our annual Christmas raffle. Any donations would be greatly appreciated.



We have our P&C meeting on Tuesday the 5<sup>th</sup> of November at 2pm, feel free to join us as we value community input.

If you have any questions or enquires please approach any of the P & C members.

Thanks

John Warby P&C

